



EasyMesh
— Compatible —

AC1900 Wi-Fi Router

Dual Band | MU-MIMO



Archer C86

1300 Mbps 5 GHz +
600 Mbps 2.4 GHz†

Faster Wi-Fi with
MU-MIMO‡

Easy Setup by
Tether App

EasyMesh-Compatible
Create Seamless Wi-Fi*

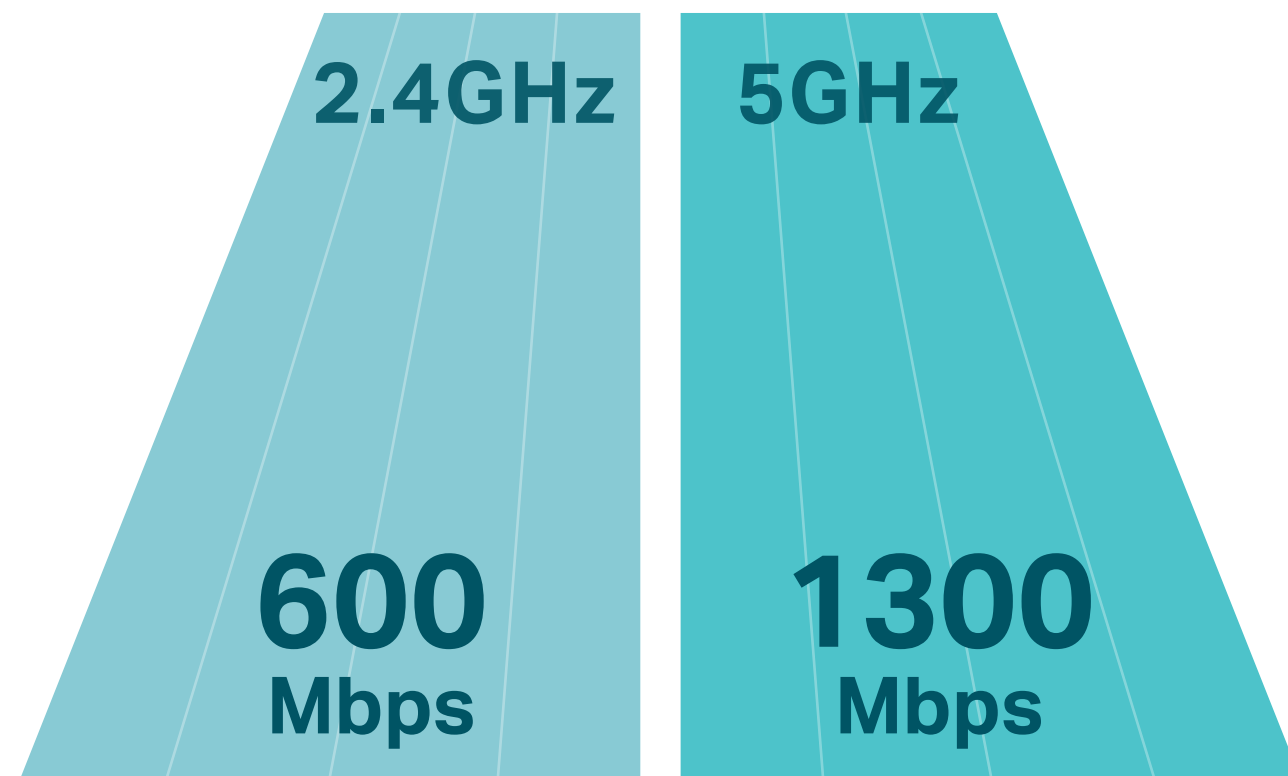
Full Gigabit
Ports

WPA3
WPA3 Security*

Highlights

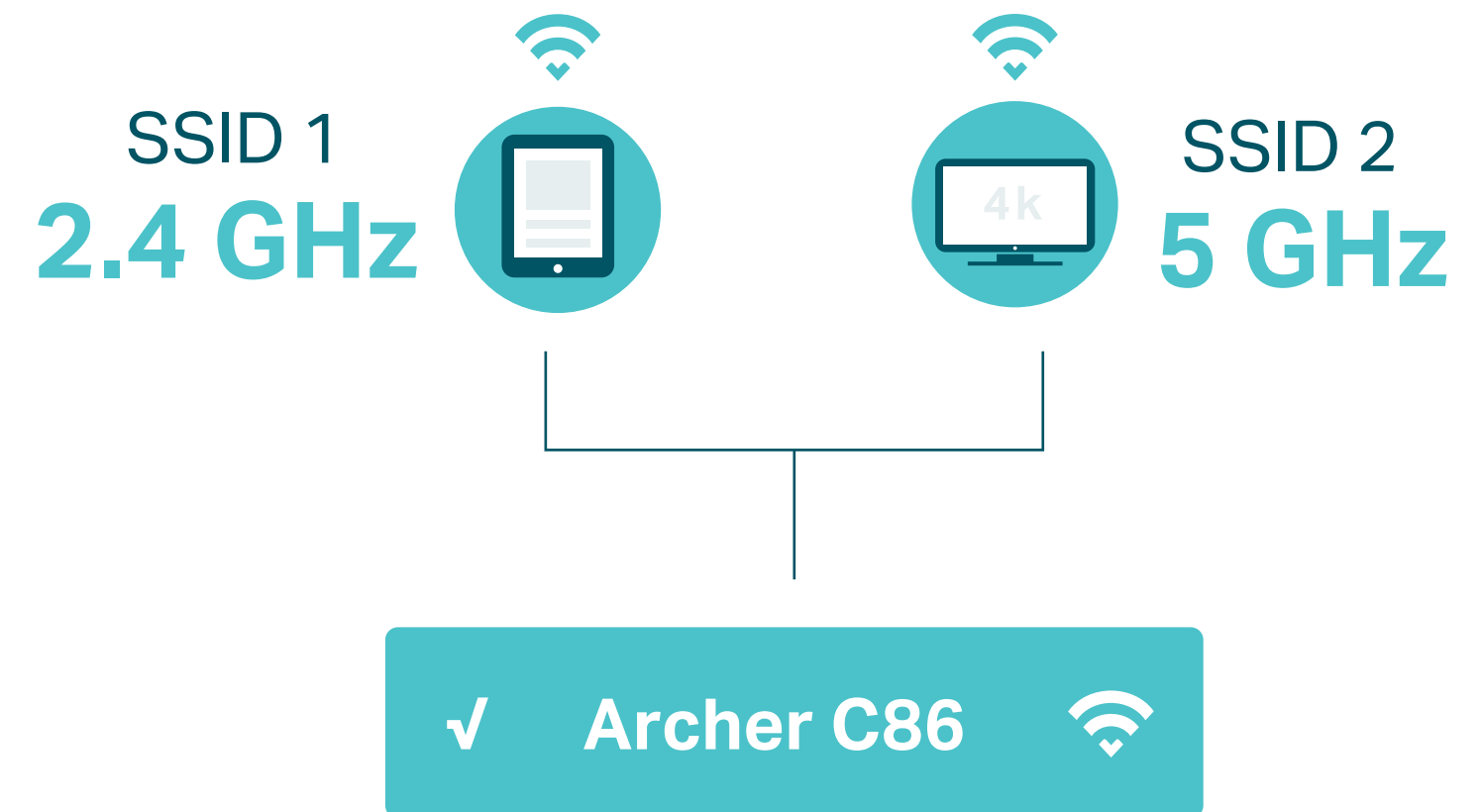
Speeds up to 1900 Mbps

1300 Mbps on the 5 GHz band and 600 Mbps on the 2.4 GHz are ideal for both everyday tasks and lag-free online entertainment. †



Smart Connect

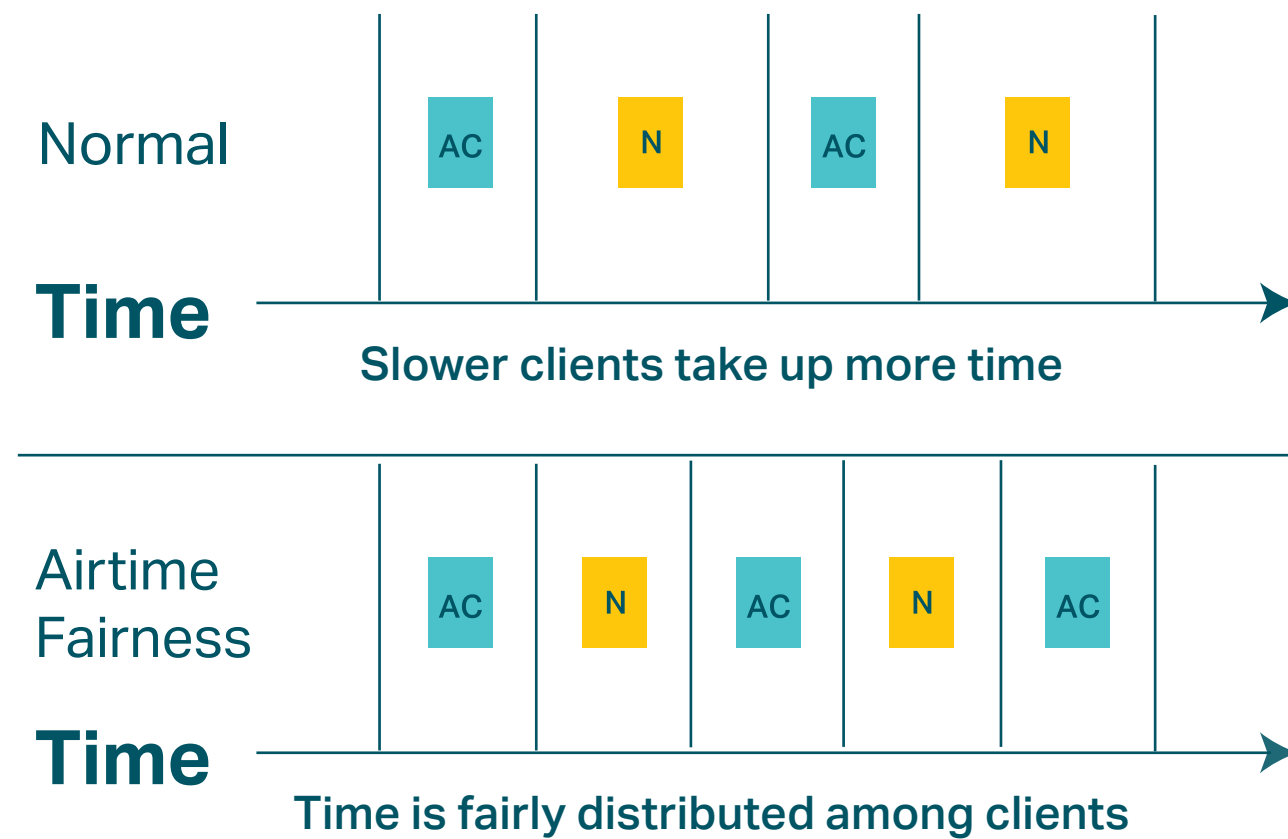
Smart Connect unites 2.4 GHz and 5 GHz band into a single Wi-Fi SSID and helps the router automatically switch each device's connection to the best available Wi-Fi band.



Highlights

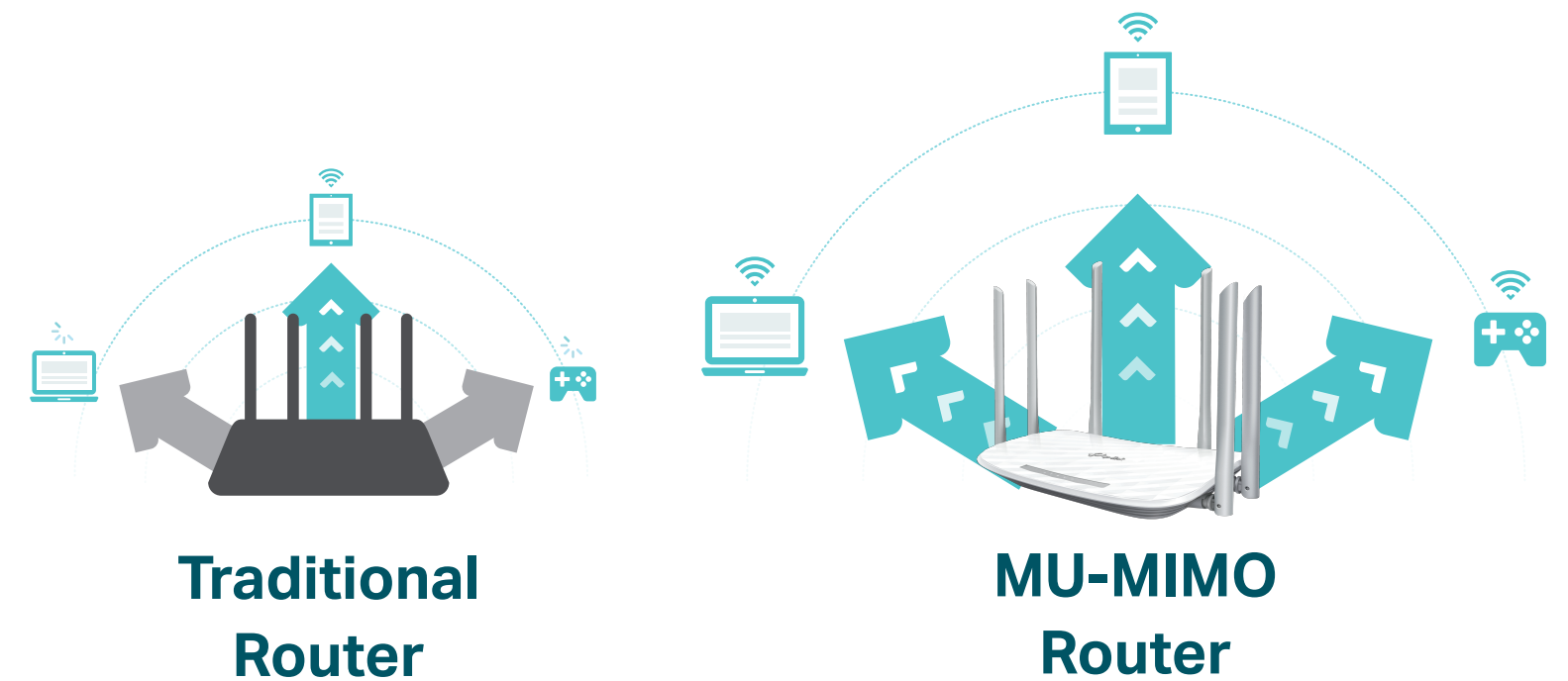
Airtime Fairness

Equally divides network time between new devices, such as your gaming rig and older devices to improve your overall Wi-Fi performance and reliability.



MU-MIMO

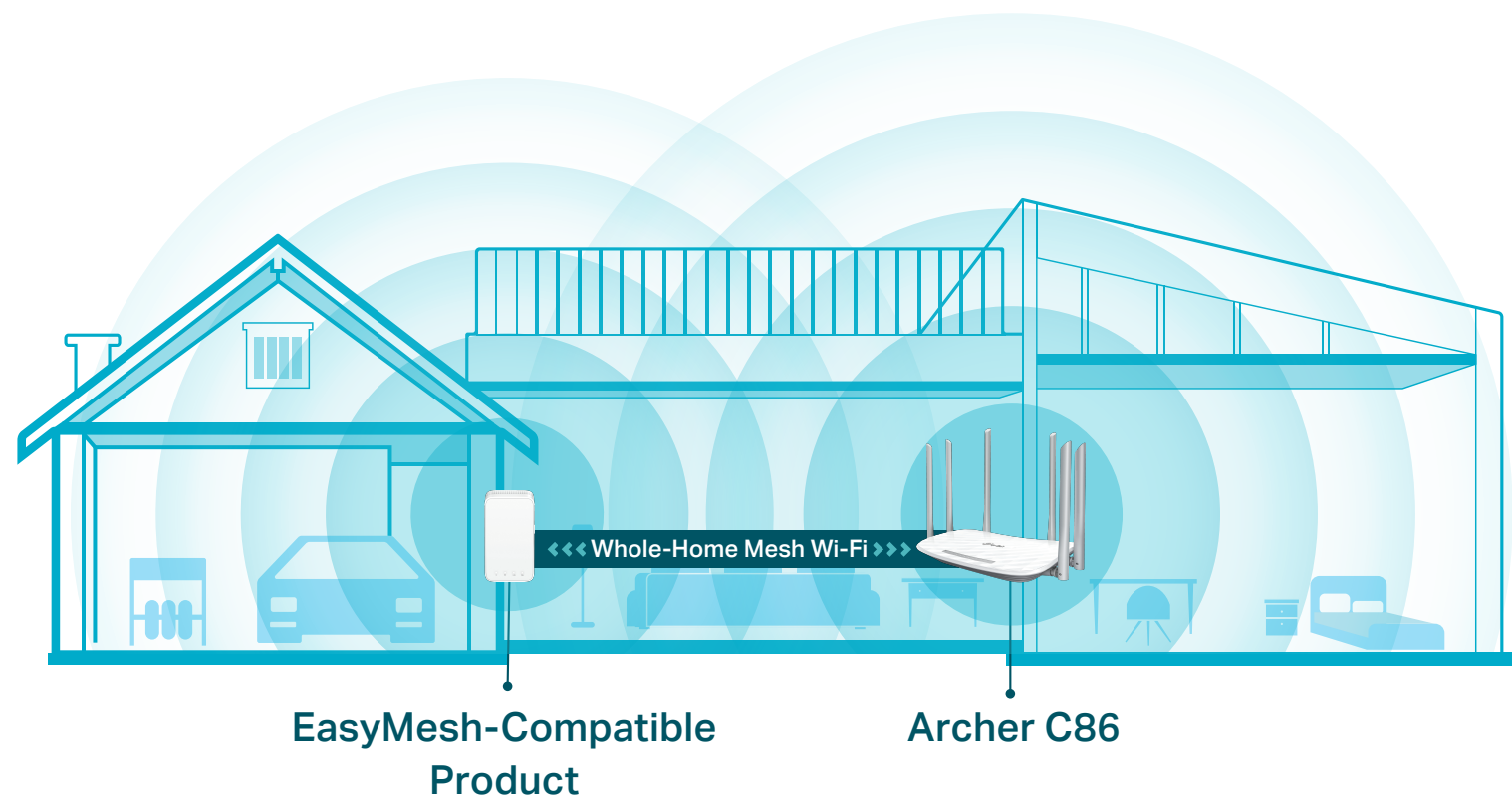
MU-MIMO technology serves multiple devices at once, reducing wait time, increasing Wi-Fi throughput for every device, and making each stream more efficient.†



Highlights

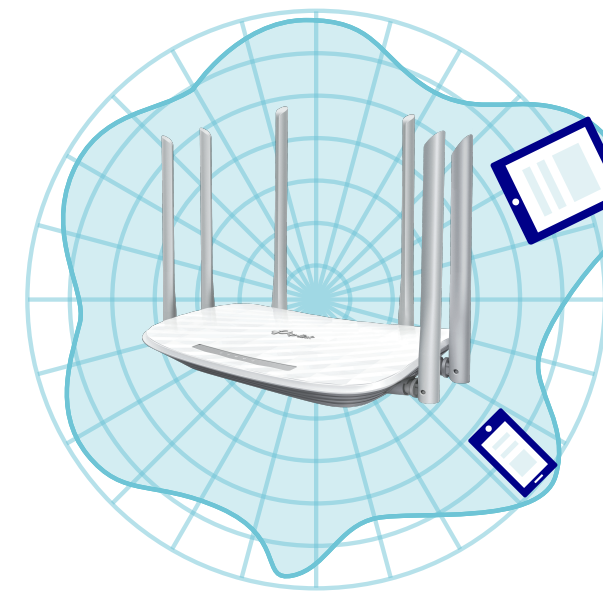
Convenient Mesh Networking^Δ

Mesh networking creates smooth, fast, stable roaming. Archer C86 can build an EasyMesh network with devices that use EasyMesh technology. It also works with other TP-Link OneMesh products to create a TP-Link OneMesh network. Eliminate Wi-Fi dead zones, expand your network, and fill your entire home with high-speed Wi-Fi.

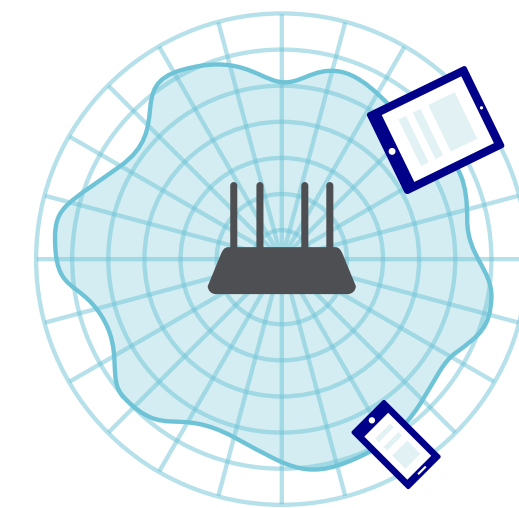


Broader Wi-Fi Coverage

Beamforming technology and six external antennas concentrates the Wi-Fi signal towards your connected devices, providing better Wi-Fi range and network performance.



Archer C86



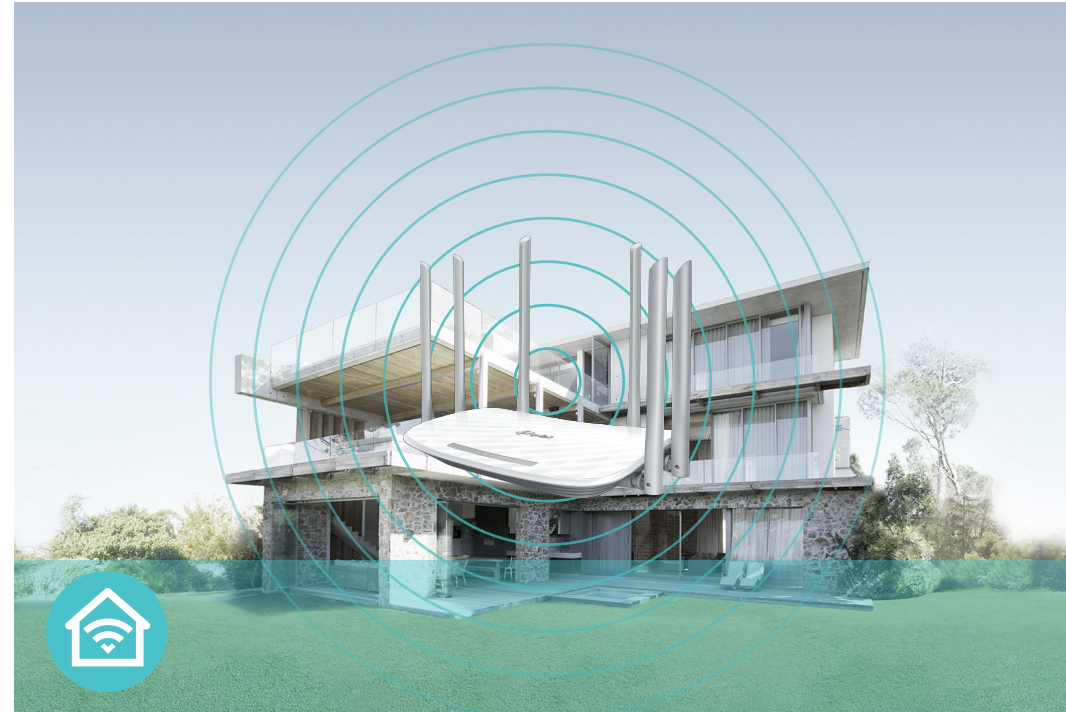
Regular Router

Features



Speed

- **802.11ac Technology** – Powered by 802.11ac Wi-Fi technology, Archer C86 creates a reliable, blazing-fast network.
- **Ultimate Wireless Speed** – 1300 Mbps on 5 GHz + 600 Mbps on 2.4 GHz
- **Gigabit Internet Access** – Take full advantages of broadband speeds up to 1 Gbps



Wi-Fi Range

- **Ultimate Range Wi-Fi** – Four external antennas deliver a Wi-Fi signal to every corner of your home, making all of your connections more efficient and stable
- **Beamforming Technology** – Concentrates Wi-Fi signals towards individual devices to ensure stronger connections
- **Seamless EasyMesh Network** – Transfer between seamless whole-home Wi-Fi without any drops or lag and manage your whole network using a centralized panel



Reliability

- **Airtime Fairness** – Balances airtime usage of connected devices to improve overall throughput and efficiency
- **Smart Connect** – Intelligently switches each device's connection to the optimum available Wi-Fi band
- **IoT Network** – Creates a dedicated wireless network to manage IoT devices together and improve their connectivity stability

Features



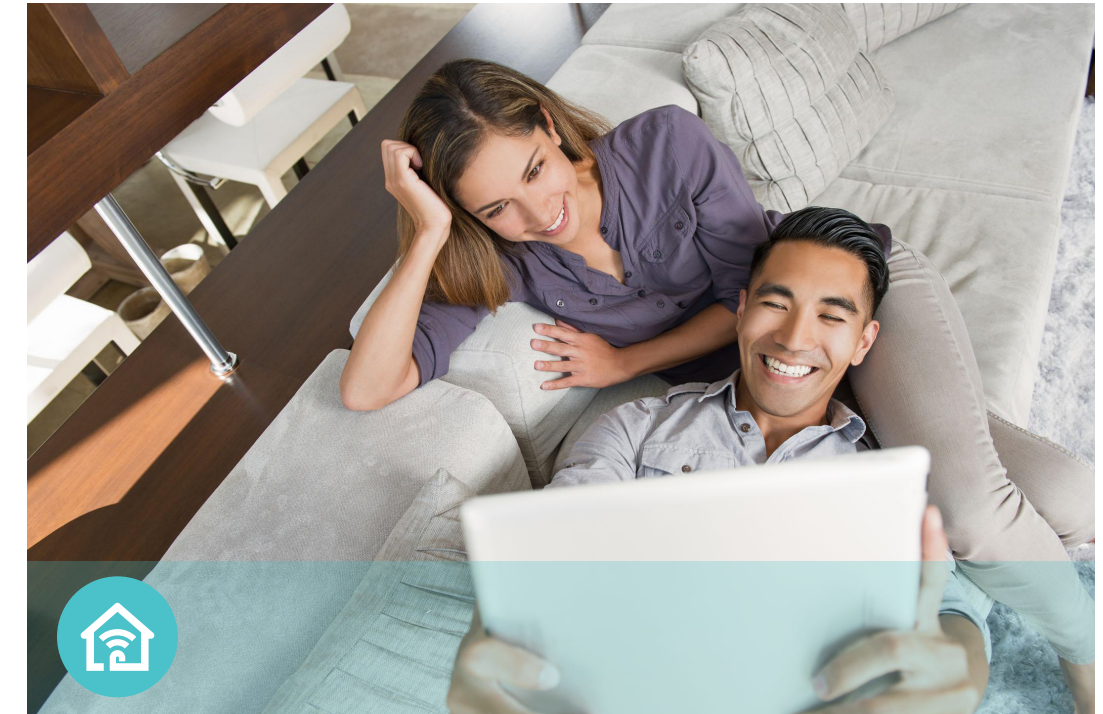
Easy Management

- Intuitive Web UI – Ensures quick and simple Installation without hassle
- Hassle-free Management with Tether App – Network management is made easy with the TP-Link Tether App, available on any Android and iOS device
- TP-Link ID – Binds the router to your TP-Link ID and other family member's accounts to manage the router



Security

- Encryptions for Secure Network – WPA, WPA2, and WPA3 encryptions provide active protection against security threats
- Guest Network – Keeps your main network secure by creating a separate network for friends and visitors
- Parental Controls – Restricts internet access time and contents for children devices



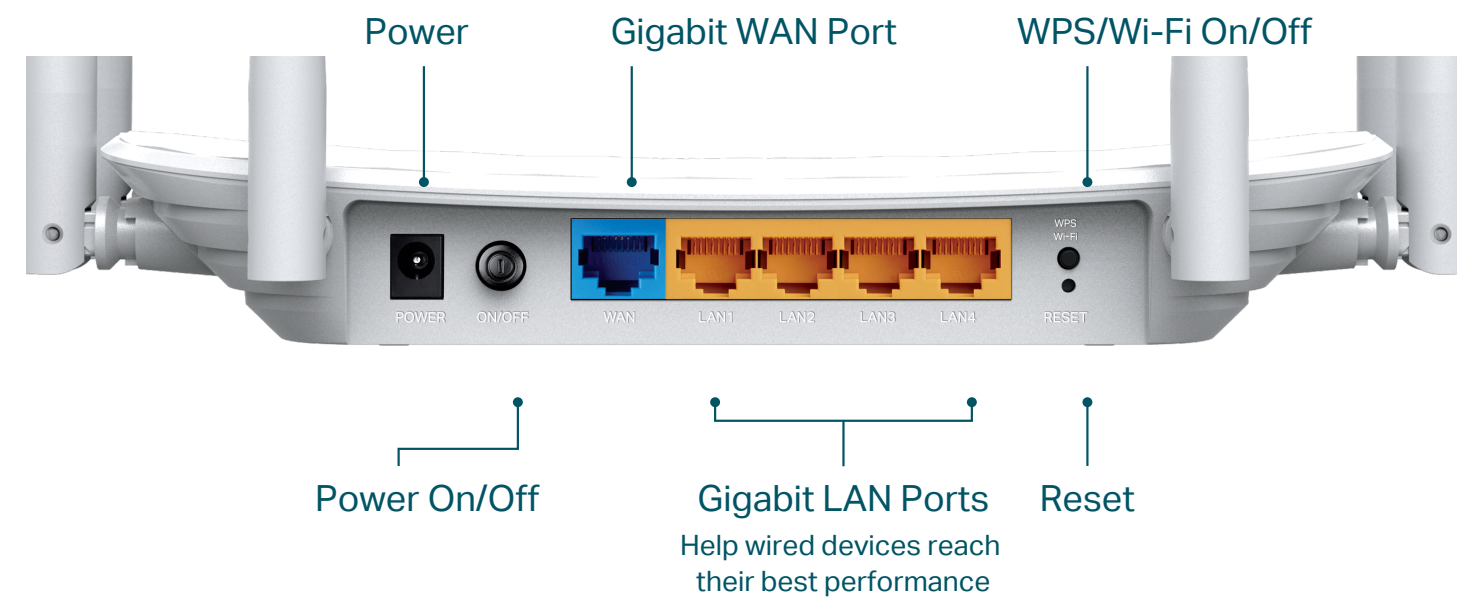
Ease of Use

- Wi-Fi Sharing – Easily shares your Wi-Fi access with a QR code
- Wi-Fi Schedule – The wireless network can be automatically off within a specified period when you do not need the wireless connection
- LED Control – Automatically turns your router's LEDs off within a specified period

Specifications

Hardware

- Ethernet Ports: 1× 10/100/1000 Mbps WAN Port, 4×10/100/1000 Mbps LAN Port
- Buttons: WPS/Wi-Fi Button, Power On/Off Button, Reset Button
- Antennas: 6 × External Omnidirectional Antennas
- External Power Supply: US version 12V/1.5A
EU version 12V/1A
- Dimensions (W x D x H): 9.1 × 5.7 × 1.5 in (229.9 × 144.2 × 37.2 mm)



Wireless

- Standards: IEEE 802.11 ac/n/a 5 GHz, IEEE 802.11 n/b/g 2.4 GHz
- Wireless: 1300 Mbps on 5 GHz + 600 Mbps on 2.4 GHz
- Frequency: 2.4 GHz and 5 GHz
- Transmit Power:
CE: <20dBm(2.4 GHz), <23dBm(5.15 GHz~5.25 GHz)
FCC:<30dBm(2.4 GHz & 5 GHz)
- Reception Sensitivity:
5 GHz:
11a 6Mbps:-94dBm, 11a 54Mbps:-77dBm
11ac VHT20 MCS8:-72dBm
11ac VHT40 MCS9:-66dBm
11ac VHT80 MCS9:-63dBm
2.4 GHz:
11g 6Mbps:-94dBm, 11g 54Mbps:-77dBm
11n HT20 MCS7:-75dBm
11n HT40 MCS7:-72dBm
- Wireless Function: Enable/Disable Wireless Radio, WMM
- Wireless Security: WPA, WPA2, WPA3 encryptions

Specifications

Software

- Quality of Service: Device Prioritization
- WAN Type: Dynamic IP/Static IP/PPPoE(Dual Access)/PPTP(Dual Access)/L2TP(Dual Access)
- EasyMesh: Supported
- Management: Local Management, Remote Management
- DHCP: Server, DHCP Client List, Address Reservation
- NAT Forwarding: Port Forwarding, Port Triggering, UPnP, DMZ
- Dynamic DNS: DynDns, NO-IP, TP-Link
- Access Control: Allow List, Deny List
- Parental Controls: URL Filtering, Time Controls
- Firewall Security: SPI Firewall, IP and MAC Address Binding
- Protocols: IPv4, IPv6
- Guest Network: 2.4 GHz Guest Network, 5 GHz Guest Network

Others

- Certification: CE, FCC, RoHS
- System Requirements: Edge, Firefox, Chrome, Safari, or other JavaScript-enabled browser
*You are recommended to use the latest version
Cable or DSL Modem (if needed)
Subscription with an internet service provider (for internet access)
- Environment: Operating Temperature: 0°C~40°C (32°F ~104°F)
Operating Humidity: 10%~90% non-condensing
Storage Humidity: 5%~90% non-condensing
- Package Contents
Wireless Router Archer C86
Power Adapter
RJ45 Ethernet Cable
Quick Installation Guide



For more information, please visit

https://www.tp-link.com/products/details/?model=Archer+C86_V2

or scan the QR code left

Attention: This device may only be used indoors in all EU member states, EFTA countries and Northern Ireland.

Attention: This device may only be used indoors in Great Britain.

Specifications are subject to change without notice. All the brands and product names are trademarks or registered trademarks of their respective holders.

This device complies with part 15 of the FCC Rules. Operation is subject to the following two conditions: (1) This device may not cause harmful interference, and(2) this device must accept any interference received, including interference that may cause undesired operation.

*Maximum wireless signal rates are the physical rates derived from IEEE Standard 802.11 specifications. Actual wireless data throughput and wireless coverage are not guaranteed and will vary as a result of network conditions, client limitations, and environmental factors, including building materials, obstacles, volume and density of traffic, and client location.

†Use of MU-MIMO requires clients to also support MU-MIMO.

‡Use of WPA3 requires clients to also support the corresponding feature.

§TP-Link EasyMesh-compatible products can network with other devices that use EasyMesh. Failed connections may be due to firmware conflicts of different vendors.

¶The EasyMesh-Compatible function is still being developed on some models and will be supported in subsequent software updates.

©2024 TP-Link