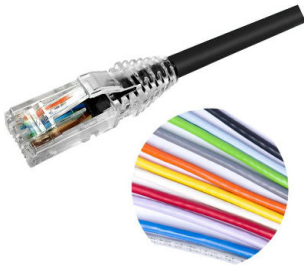


Base Product



NETCONNECT® Cat 6 U/UTP RJ45 Patch Cord, LSZH

- High-performance patch cords exceeding industry standards supporting NETCONNECT channel specifications
- Standardized transparent, slim-line boots provides consistent patch cord appearance and supports highest density applications
- Colored clips are available to fit the transparent boot, eliminating the need of multiple colors for matching every jacket color
- Colored pull latch tabs are available for easier plug release handling from the modular jack

Product Classification

| | |
|------------------------------|---|
| Regional Availability | Asia EMEA Latin America |
| Portfolio | NETCONNECT® |
| Product Type | Twisted pair patch cord |
| Product Series | NPC |
| Ordering Note | Cords < 1 m are valid elements for use in a channel or as an equipment interconnect but due to their limited length are not guaranteed to meet component compliance requirements that were developed to assess the quality of longer cords Cords > 1 m are authorized for use in channels and are an effective standalone method used to connect active devices |

General Specifications

| | |
|---------------------------------------|--------------------|
| ANSI/TIA Category | 6 |
| Cable Type | U/UTP (unshielded) |
| Conductor Type | Stranded |
| Interface, Connector A | RJ45 plug |
| Interface Feature, connector A | Standard |
| Interface, Connector B | RJ45 plug |
| Interface Feature, connector B | Standard |

NPC06UZDB

| | |
|------------------------|---|
| Jacket Color | Black Blue Green Orange Red White Yellow Slate/Gray |
| Pairs, quantity | 4 |
| Transmission Standards | ANSI/TIA-568.2-D ISO/IEC 11801 Class E |
| Wiring | T568B |

Dimensions

| | |
|--------------------------------------|--------------------|
| Cable Assembly Length Range (m) | 1 – 30 |
| Cable Assembly Length Range (ft) | 1 – 100 |
| Cable Assembly Length Range (cm) | 15 – 999 |
| Cable Assembly Length Range (in) | 6 – 999 |
| Diameter Over Jacket | 5.97 mm 0.235 in |
| Compatible Conductor Gauge, stranded | 24 AWG |

Wiring Diagram

| | Connector A | Connector B |
|------------|--------------|--------------|
| Position 1 | White/Orange | White/Orange |
| Position 2 | Orange | Orange |
| Position 3 | Lt. Green | Lt. Green |
| Position 4 | Blue | Blue |
| Position 5 | Lt. Blue | Lt. Blue |
| Position 6 | Green | Green |
| Position 7 | Lt. Brown | Lt. Brown |
| Position 8 | Brown | Brown |

Electrical Specifications

| | |
|-------------------------------|-------------------------------|
| Contact Resistance, maximum | 20 mOhm |
| Current Rating at Temperature | 1.5 A @ 20 °C 1.5 A @ 68 °F |

NPC06UZDB

| | |
|--|---|
| dc Resistance, maximum | 0.3 ohm |
| Dielectric Withstand Voltage, RMS, contact-to-contact | 1,000 Vac @ 60 Hz |
| Insulation Resistance, minimum | 500 MOhm |
| Remote Powering | Fully complies with the recommendations set forth by IEEE 802.3bt (Type 4) for the safe delivery of power over LAN cable when installed according to ISO/IEC 14763-2, CENELEC EN 50174-1, CENELEC EN 50174-2 or TIA TSB-184-A |
| PoE Durability | Supports IEEE 802.3bt Type 4 (90 W) applications greater than 3000 plug to jack mating cycles |
| Safety Voltage Rating | 300 V |

Ordering Tree

NPC -

9
10
11
12

Outlet Color

| | | |
|---|-------|----------------|
| 9 | 0 | Not applicable |
| | 1 | Black |
| | 2 | Blue |
| | 3 | Gray |
| | 4 | Green |
| | 5 | Ivory |
| | 6 | Orange |
| | 7 | Red |
| | 8 | White |
| | 9 | Yellow |
| B | Lilac | |

Jacket Color

| | | |
|----|------|--------------|
| 10 | 1 | Black |
| | 2 | Light blue |
| | 3 | Dark gray |
| | 4 | Spring green |
| | 5 | Ivory |
| | 6 | Orange |
| | 7 | Red |
| | 8 | White |
| | 9 | Yellow |
| | B | Lilac |
| | C | Gray |
| | K | Pink |
| | L | Violet |
| | M | Green |
| Z | Blue | |

UOM

| | | |
|----|---|-------|
| 11 | M | Meter |
|----|---|-------|

Length

| | |
|----|-----|
| 12 | XXX |
|----|-----|

Notes

- Cords > 1m are authorized for use in channels and are an effective standalone method used to connect active devices
- Cords < 1m are also valid elements for use in a channel or as an equipment interconnect but due to their limited length are not guaranteed to meet component compliance requirements that were developed to assess the quality of longer cords

Material Specifications

Conductor Material

Tinned copper

| | |
|---------------------------------|-------------------------------|
| Contact Plating Material | Gold over nickel |
| Jacket Material | Low Smoke Zero Halogen (LSZH) |

Mechanical Specifications

| | |
|--------------------------------------|--------------------------------|
| Plug Retention Force, minimum | 50 N 11.24 lbf |
| Plug to Jack Mating Cycles | Complies to IEC 60603-7 series |

Environmental Specifications

| | |
|------------------------------|--------------------------------------|
| Operating Temperature | -20 °C to +60 °C (-4 °F to +140 °F) |
| Storage Temperature | -40 °C to +70 °C (-40 °F to +158 °F) |
| Environmental Space | Low Smoke Zero Halogen (LSZH) |
| Flame Test Method | IEC 60332-1 |
| Flammability Rating | UL 94 V-0 |
| Safety Standard | Anatel ETL cETL |

Packaging and Weights

| | |
|---------------------------|---|
| Packaging quantity | 1 |
|---------------------------|---|

Regulatory Compliance/Certifications

| Agency | Classification |
|---------------|--|
| CHINA-ROHS | Below maximum concentration value |
| ISO 9001:2015 | Designed, manufactured and/or distributed under this quality management system |
| RCM | Compliant to electrical safety & telecommunications requirements |
| REACH-SVHC | Compliant as per SVHC revision on www.commscope.com/ProductCompliance |
| ROHS | Compliant |
| UK-ROHS | Compliant |



Included Products

- 6-2843007-1 - Modular Plug, Category 6A/6, Unshielded, Cond Insulation OD - 0.99mm, 100 pcs
MP-6AU-Plug-A-1
- 2843020-3 - Integrated Boot and Pair Manager for MP-6AU, size 59, transparent
MP-6AU-Boot-59-1