

# Outdoor Pan/Tilt Security Wi-Fi Camera

2K  
QHD

Tapo C520WS

 Starlight Color Night Vision

Person/Pet/  
Vehicle Detection

Smart Motion  
Tracking

Local microSD Storage  
(Up to 512 GB)\*



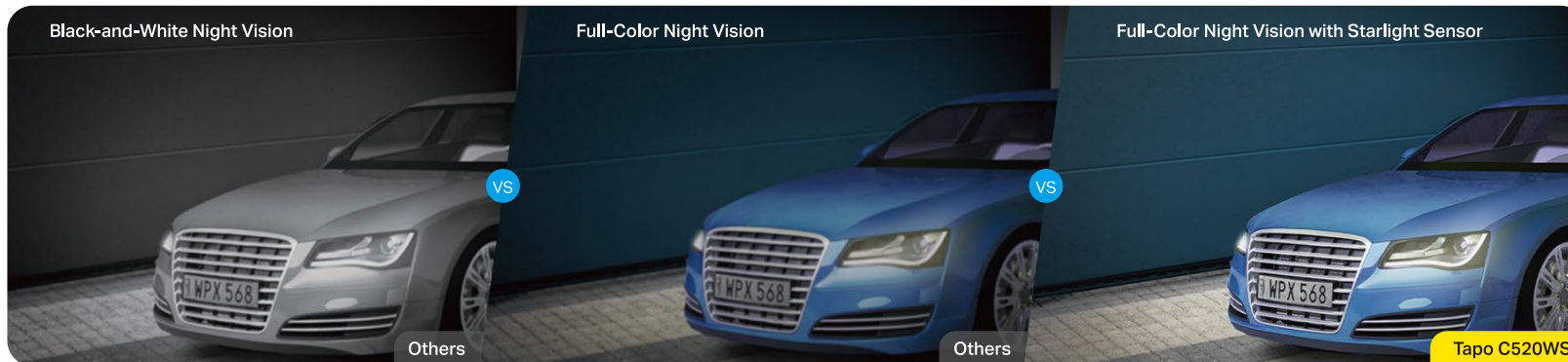
works with | 

 works with  
Google Home

## // Highlights

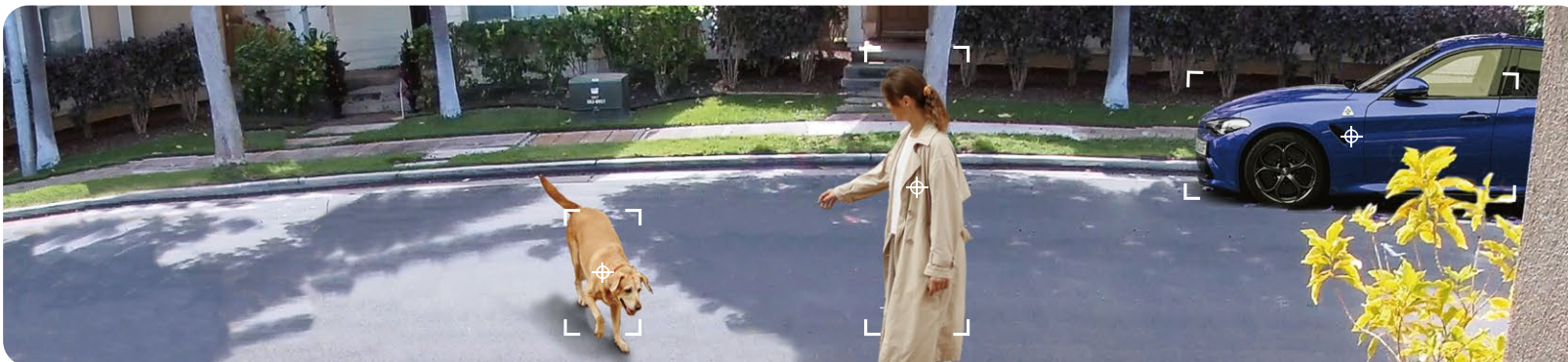
### 2K QHD, Starlight Color Night Vision

Equipped with an F1.6 large-aperture lens and starlight sensor, Tapo C520WS enhances your security by revealing highly-detailed and bright-color images even under low-light conditions.



### Person/Pet/Vehicle Detection and Notification

Smart AI identifies people, pets, and vehicles, notifying users as needed.



## // Features

### 360° Visual Coverage

Provides 360° horizontal & 130° vertical view (180° vertical view in Privacy Mode) range to capture everything around.

### IP66 Weatherproof

Offers excellent waterproof and dustproof performance for outdoor scenarios.

### Local<sup>†</sup> and Cloud<sup>‡</sup> Storage

Save recorded videos to an installed microSD card (up to 512 GB), or use Tapo Care cloud storage service.

### Multiple Installation Options

Use the mounting screws, template and loops<sup>‡</sup> to install on any wall, ceiling or pole for the perfect view—wherever you want.

### Two-Way Audio

Enables communication through a built-in microphone and speaker.

### Dual Powerful Antennas

Two external antennas ensure a powerful and stable wireless connection.

### Wired/Wireless Networking

Connect the camera to your network through Ethernet or Wi-Fi for more flexible installation.

### Customizable Sound and Light Alarm

Records your customized audio as an alarm to extend your usage. Set to trigger a light/sound alarm when detecting activity.

<sup>†</sup>microSD card needs to be purchased separately.

<sup>‡</sup>Tapo Care needs to be subscribed separately.

For more information, please visit <https://www.tapo.com/>

All brands and product names are trademarks or registered trademarks of their respective holders. Specifications are subject to change without notice.

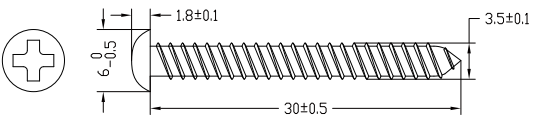
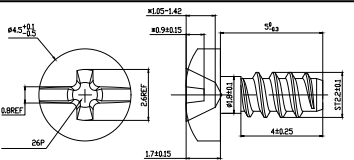
©2024 TP-Link

## // Specifications

<b>Camera</b>	Image Sensor	1/3" Progressive Scan CMOS Starlight Sensor
	Lens	Focal Length: 3.2 mm Aperture: F1.6 Field of View: 112° (Diagonal), 95° (Horizontal), 53° (Vertical)
	Night Vision	850 nm IR LED (98 ft / 29.9 m) Full-Color Night Vision
	Day/Night Switch	IR-Cut Filter with Auto-Switching
	Lighting	2× Built-in Spotlights
	Interface & Button	1× Ethernet Port 1× RESET Button 1× microSD Card Slot (Up to 512 GB)
	Hub Compatibility	/
<b>Video &amp; Audio</b>	Maximum Resolution	2K QHD 4MP (2560 × 1440 px)
	Frame Rate	15/20/25/30 fps (Default 15fps)
	Digital Zoom	12x
	Video Compression	H.264
	Live View	Yes

<b>Video &amp; Audio</b>	Image Enhancement	3DNR WDR
	Audio Input & Output	Built-in Microphone and Speaker
	Audio Communication	Two-Way Audio with Noise Cancellation
	Siren Volume	93 dB (Level measured at 4-inch/10-cm distance)
<b>Storage</b>	Local Storage	microSD Card Slot on Camera (Up to 512 GB)
	Cloud Storage	Tapo Care Cloud Storage Services (Subscription required)
<b>Detection &amp; Notification</b>	Sensor	/
	AI Detection	Motion Detection Person Detection Pet Detection Vehicle Detection Line-Crossing Detection Camera Tampering
	Activity Zones	Yes *Only works with Motion Detection.
	Output Notification	System Notification System Notification with Snapshot (Tapo Care Services)

<b>Network</b>	Network Connectivity	Connect via Wi-Fi
	Wireless Connectivity	IEEE 802.11b/g/n, 2.4 GHz Wi-Fi
	Transmission Rate	11b: 11 Mbps 11g: 54 Mbps 11n: 144.4 Mbps
	Protocol	TCP/IP, DHCP, ICMP, DNS, NTP, HTTPS, TCP, UDP
	Max. Distance Between Hub and Camera/Doorbell	/
	Ethernet Port	1× 10/100 Mbps RJ45 Port on Camera
	RTSP	Yes
	ONVIF	Yes
<b>Security</b>	Security	On-Device Machine Learning 128-bit AES Encryption with SSL/TLS WPA/WPA2-PSK/WPA3
<b>Power</b>	Power Source	9V DC Power Adapter
	Input Voltage	100-240 V, 50/60 Hz
	Output Voltage	9 V, 0.85 A (DC Power)
	DC Power Connector Size	Inside Ø: 2.1 mm Outside Ø: 5.5 mm
	Power Cord Length	3 m

<b>Power</b>	Typical Power Consumption	3.75 W
	Maximum Power Consumption	7.65 W
<b>General</b>	Certifications	CE, FCC, RoHS, RCM
	Smart Integration	Google Assistant, Amazon Alexa
	Weather Resistance	IP66
	System Requirements	Tapo App: iOS 9.0 or higher, Andriod 4.4 or higher
	Mounting Options	Ceiling-Mounted Wall-Mounted Pole-Mounted (Pole-Mounting loops required but not included)
	Operating Temperature	-30 °C ~ 60 °C (-22 °F ~ 140 °F)
	Storage Temperature	-40 °C ~ 60 °C (-40 °F ~ 140 °F)
	Operating Humidity	10% ~ 90% RH, Non-condensing
	Storage Humidity	0 ~ 90% RH, Non-condensing
	Charging Temperature	\
	Mounting Screw Size	
	SD Card Slot Cover Screw Size	

<b>General</b>	Dimensions	4.9 × 4.8 × 3.5 in (123.8 × 123 × 90 mm)
	Weight	14 oz / 396.84 g
	Package Contents	Tapo C520WS Camera Power Adapter Mounting Anchors Mounting Screws Bracket Screws Mounting Template Mounting Bracket Waterproof Seal Waterproof Cable Attachments Quick Start Guide