

## Cat6 UTP Outdoor Cable

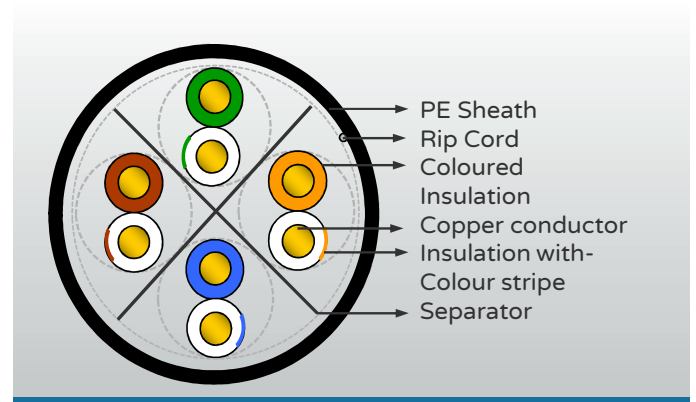
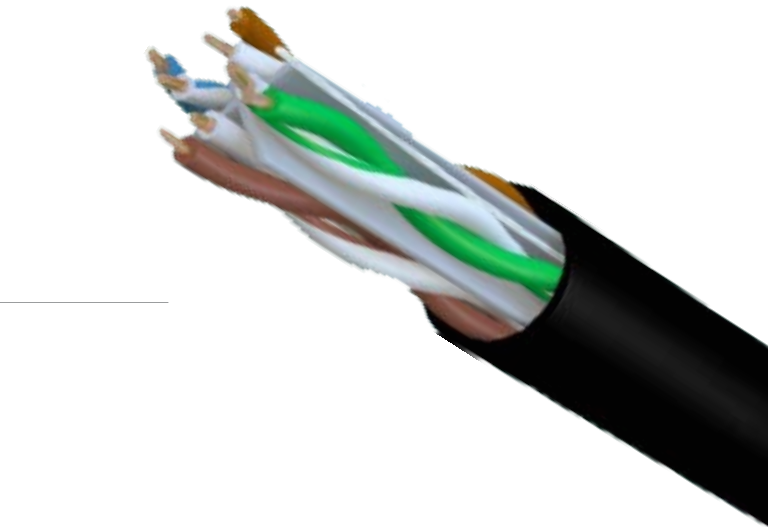
### PRODUCT APPLICATION

- Enhanced performance cable for transmission of high speed data, digital and analogue voice and video (RGB) signals on LANs
- Supports Gigabit Ethernet (1000 baseT) standard
- Operates at a bandwidth of 250MHz
- Suitable for outdoor duct application

This cable complies to the requirements of ANSI/TIA-568.2-D and ISO/IEC 11801

### CONSTRUCTION

Conductor	: 23 AWG Solid bare Copper 0.555 ± 0.010 mm
Insulation	: High Density Polyethylene Solid
Pairs	: 2 Insulated conductors twisted together
Sheath	: PE Black - UV Stabilized
Cable Diameter	: 6.2 ± 0.2 mm



### ELECTRICAL CHARACTERISTICS

Characteristic Impedance	: 100+15Ω
Mutual Capacitance	: <5.6nF/100m
Resistance Unbalance	: 5% Max
Capacitance Unbalance	: 330pF/100m
Delay Skew	: < 45nS
Conductor Resistance	: <9.381Ω/100m

### COLOUR CODE

<u>PAIR NO</u>	<u>COLOUR</u>
1-2	White & Orange
3-6	White & Green
4-5	White & Blue
7-8	White & Brown

## Cat6a F/UTP Cable

### TRANSMISSION CHARACTERISTICS

Frequency (MHz)	Insertion Loss Max.(dB)	NEXT (dB) Min.	RL (dB) Min.	PS NEXT (dB) Min.	ACR-F (dB) Min.	PS ACR-F (dB) Min.
1	1.9	65	19.1	62	64.2	61.2
4	3.5	64.1	21	61.8	52.1	49.1
8	5	59.4	21	57	46.1	43.1
10	5.5	57.8	21	55.5	44.2	41.2
16	7	54.6	20	52.2	40.1	37.1
20	7.9	53.1	19.5	50.7	38.2	35.2
25	8.9	51.5	19	49.1	36.2	33.2
31.25	10	50	18.5	47.5	34.3	31.3
62.5	14.4	45.1	16	42.7	28.3	25.3
100	18.6	41.8	14	39.3	24.2	21.2
200	27.4	36.9	11	34.3	18.2	15.2
250	31.1	35.3	10	32.7	16.2	13.2

### MECHANICAL CHARACTERISTICS

Bending Radius	: < 4x Cable Diameter at 20°C ± 1°C
Pulling Force	: 11.5 Kgs
Temperature Range	
Installation	: 0° to +50°C
Operation	:-20° to +70°C

### ORDERING INFORMATION

MODEL NAME	DESCRIPTION
NCB-C6UOBLR-305	Cat.6 UTP Outdoor Cable-UV PE Sheath,305m