



# AC1200 Wireless Dual Band 4G LTE Router

Share Your 4G LTE Network

Archer MR402



4G(TDD&FDD)/3G  
Compatible



300 Mbps + 867 Mbps  
Dual Band Wi-Fi†

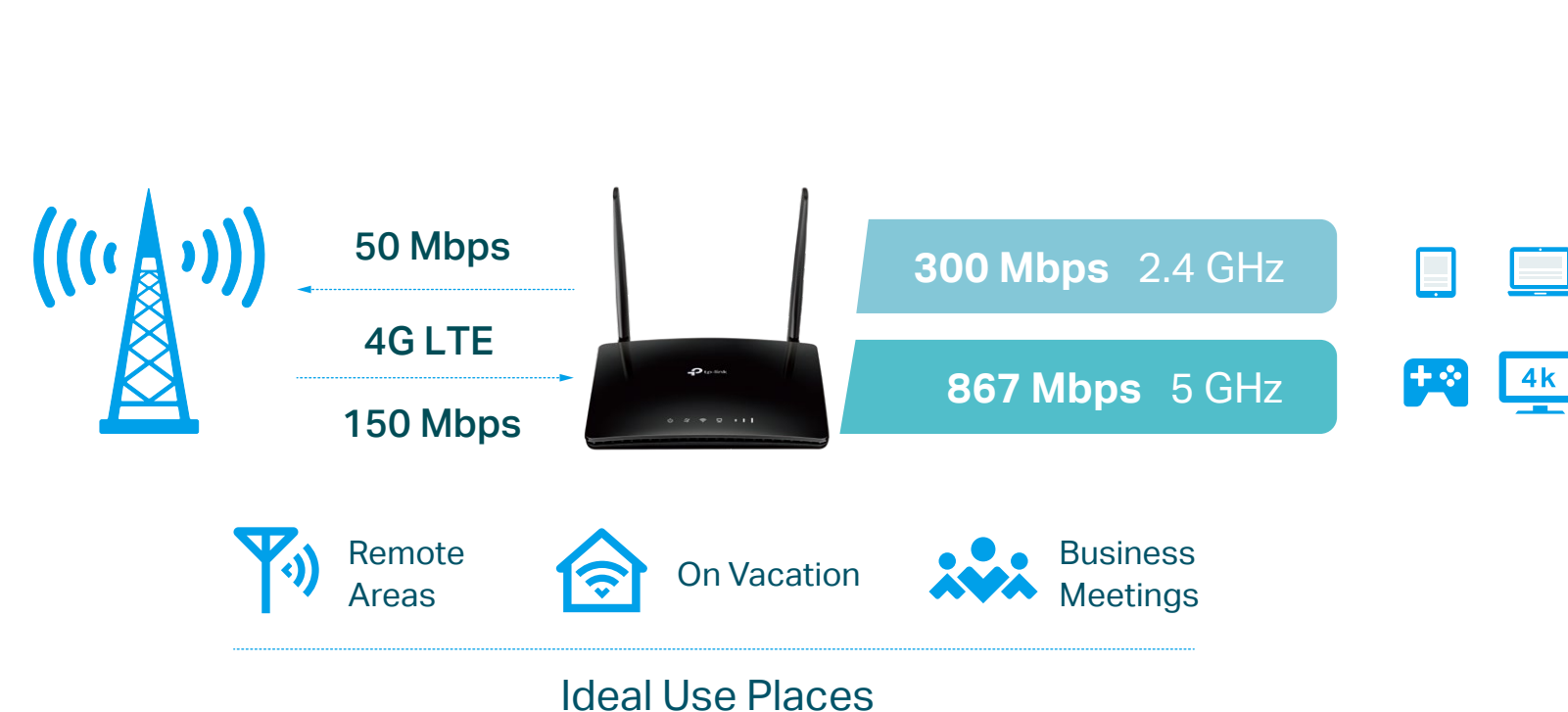


MU-MIMO for  
More Efficiency†

# Highlights

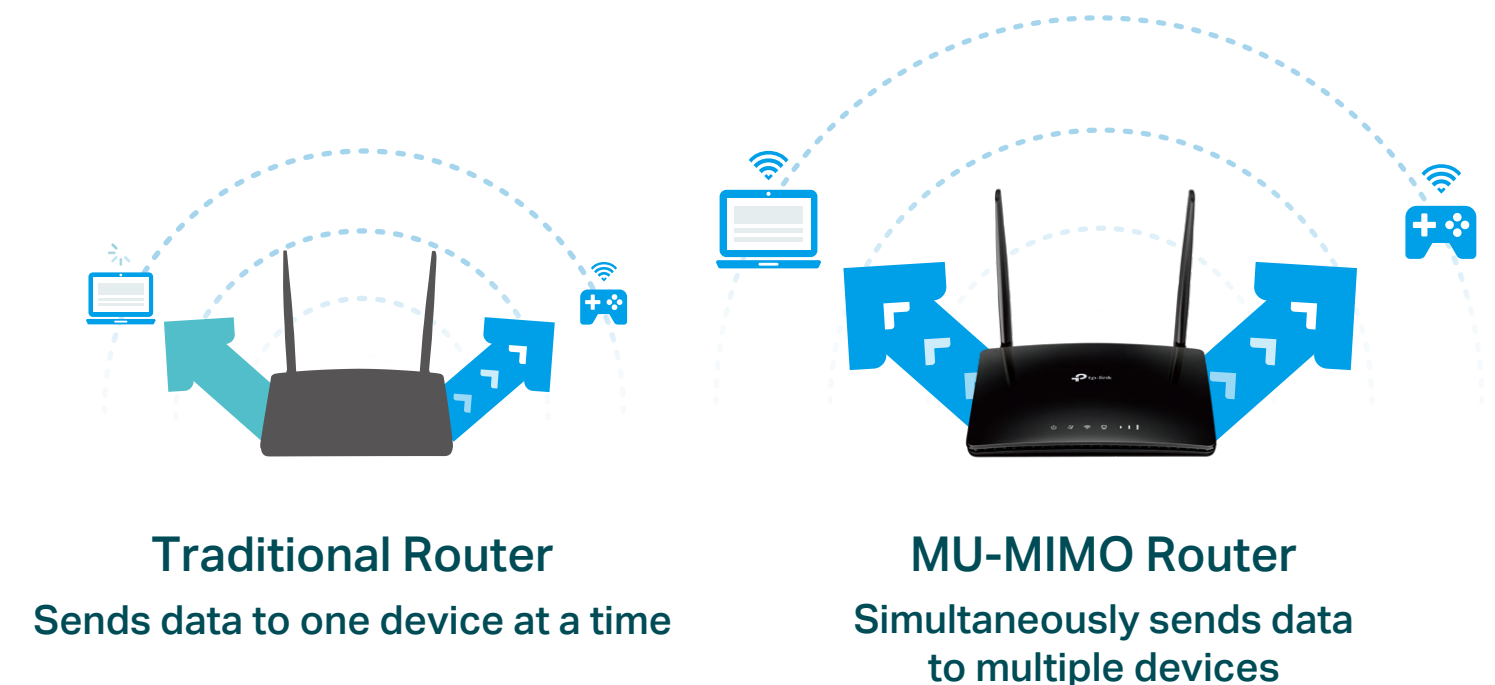
## Superfast 4G LTE Speed & Stream-Ready AC Wi-Fi

The Archer MR402 uses 4G LTE technology to achieve speeds of up to 150 Mbps download and 50 Mbps upload. It also shares a simultaneous dual band Wi-Fi network with maximum speeds of 300 Mbps on 2.4 GHz and 867 Mbps on 5 GHz for gaming, streaming and more.<sup>†</sup>



## MU-MIMO for More Efficiency

MU-MIMO technology serves multiple devices at once, reducing wait time, increasing Wi-Fi throughput for every device, and making each stream more efficient.<sup>‡</sup>



# Highlights

## Plug and Play

Simply insert your 3G/4G nano SIM card into the built-in slot, turn on the MR402 and start surfing.



**nano SIM Card**

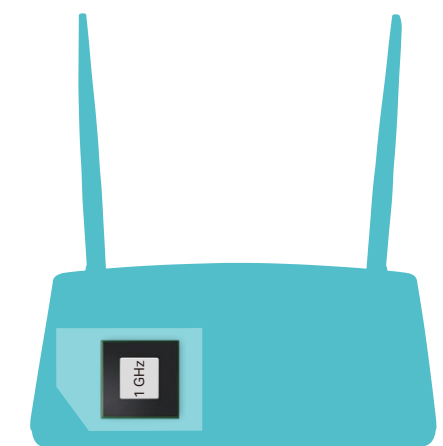


**Start Surfing!**

## More Devices, More Stability

Connect up to 64 wireless devices with ease, thanks to a powerful processor that boosts data transfer speeds while ensuring dependable network stability.

**Up to  
64  
Devices**



**Powerful CPU**

# Highlights

## Support TP-Link OneMesh™

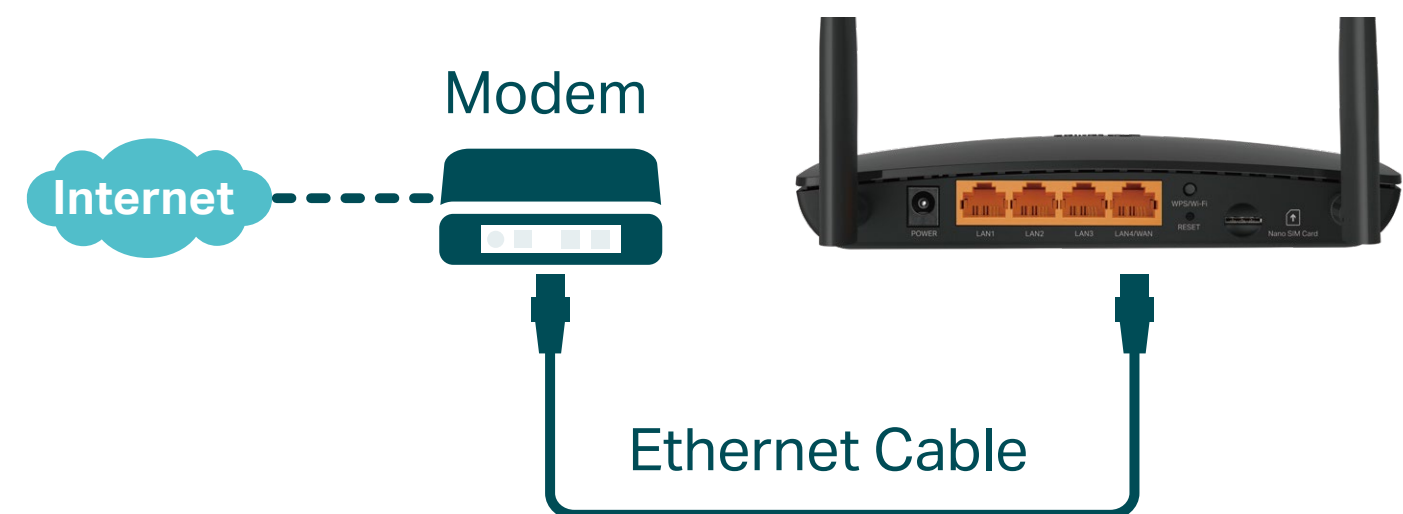
Co-work with TP-Link OneMesh products, to provide a more flexible and cost-effective Mesh network with a single Wi-Fi name for seamless whole-home coverage.

\*OneMesh Range Extender or Powerline Adapter sold separately.



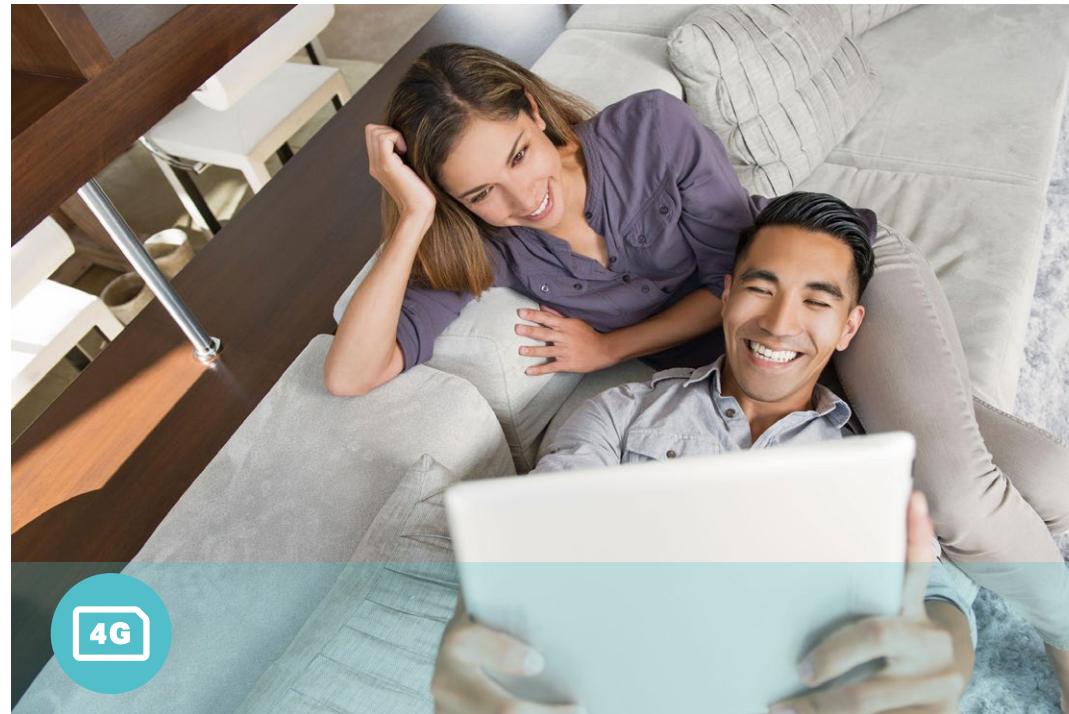
## Available WAN Connection

The WAN/LAN port enables MR402 to work as a traditional wireless router which is compatible with cable, fiber, and DSL modems. And when it's set as a wireless router, its 3G/4G connection works as a backup to provide a sustained and reliable internet connection for you.





# Features



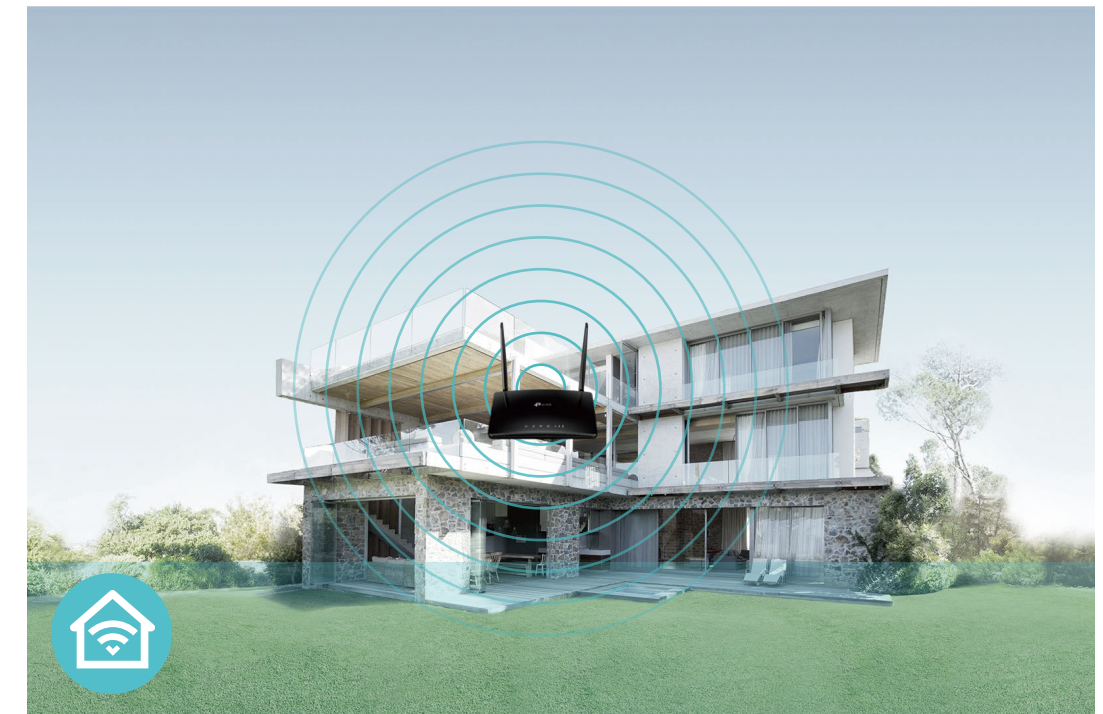
## 4G LTE

- 4G LTE – Ideal for cutting-edge 4G LTE network
- Backward Compatible – Compatible with 3G network



## Wi-Fi Speed

- Superior Wireless Speed – Combined wireless speeds up to 300 Mbps over 2.4 GHz, and 867 Mbps over 5 GHz
- 802.11 ac Standard– Provides a data transfer rate 3 times faster than 802.11n for each stream



## Wi-Fi Range

- Great Coverage – Better coverage with integrated Wi-Fi omnidirectional antennas

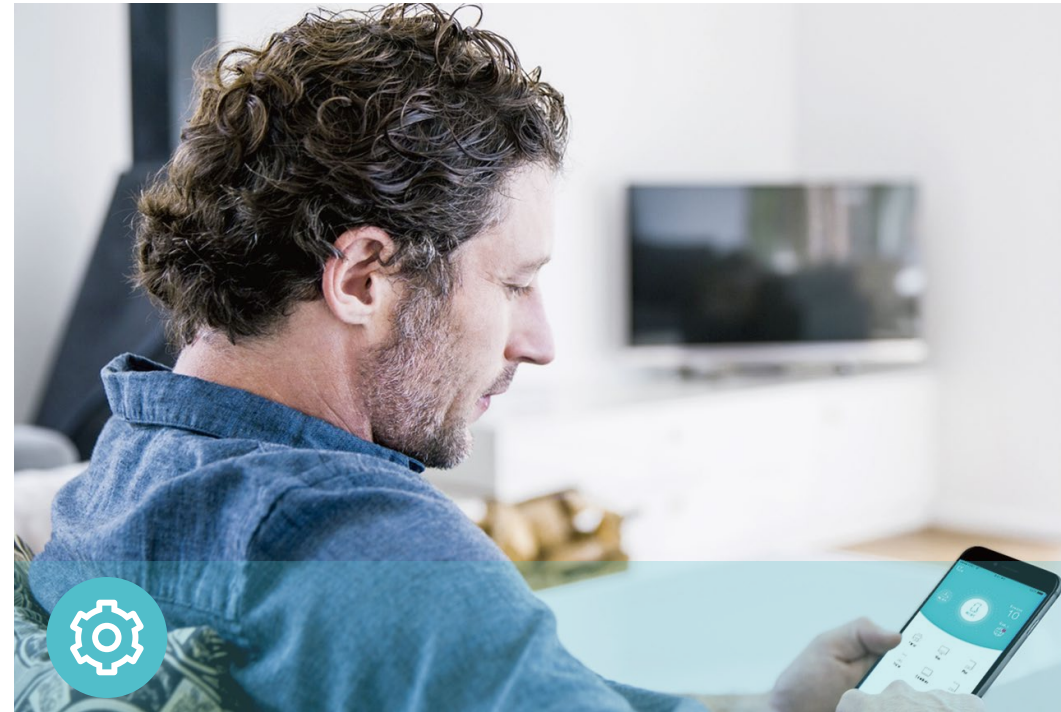


# Features



## Reliability

- **Simultaneous Dual Band** – Separate Wi-Fi bands enable more devices to connect to your network without a drop in performance
- **Easy Bandwidth Management** – Advanced QoS makes it easier for you to manage the bandwidth of connected devices
- **Superior Stability** – Powerful processor enables you to connect up to 64 wireless devices with ease



## Ease of Use

- **Intuitive Web UI** – Ensures quick and simple installation without hassle
- **Fast Encryption** – One-touch WPA wireless security encryption with the WPS button
- **Wi-Fi On/Off** – Conveniently turn on or off wireless radios as required
- **Hassle-free Management with Tether App** – Network management is made easy with the TP-Link Tether App, available on any Android and iOS device
- **Online Upgrade** – Keeps you informed of the latest firmware and allows online upgrade on the web UI



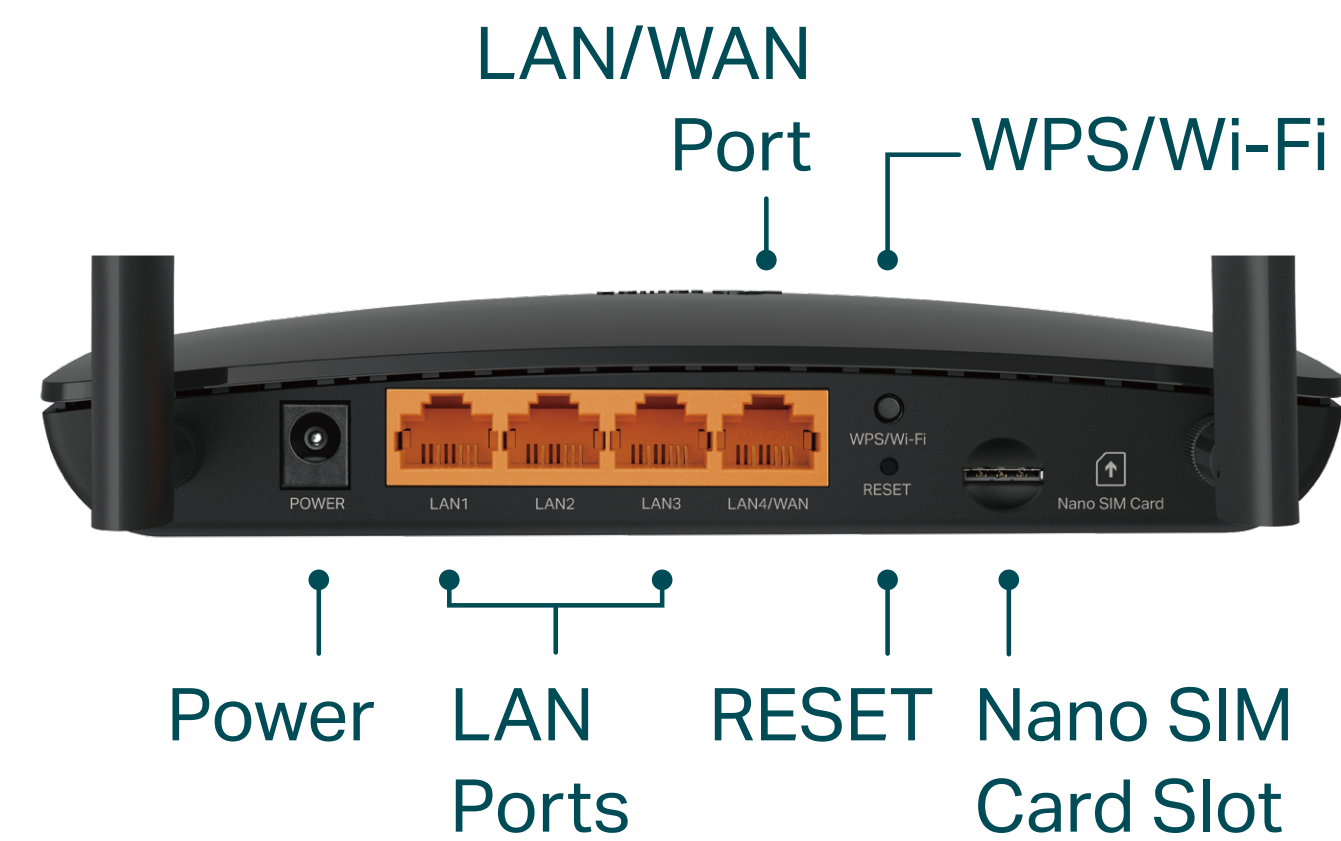
## Security

- **Guest Network** – Keeps your main network secure by creating a separate network for friends and visitors
- **Access Control** – Establishes a whitelist or blacklist to allow or restrict certain devices to access the internet
- **Parental Controls** – Restrict internet access time and contents for your children's devices
- **Encryptions for Secure Network** – WPA-PSK and WPA2-PSK encryptions provide active protection against security threats

# Specifications

## Hardware

- Interface: 3 10/100Mbps LAN Ports, 1 10/100Mbps LAN/WAN Port, 1 nano SIM Card Slot
- Buttons: WPS/Wi-Fi Button, RESET Button
- Antennas: 2 Detachable External 4G LTE Antennas
- External Power Supply: 12V/1A
- Dimensions (W x D x H): 6.85 × 4.9 × 1.32 in (174 × 124.5 × 33.5 mm)



## Wireless

- Network Type
  - 4G: FDD-LTE B1/B3/B5/B7/B8/B20/B28 (2100/1800/850/2600/900/800/700 MHz)
  - TDD-LTE B38/B40/B41 (2600/2300/2500 MHz)
  - 3G: DC-HSPA+/HSPA+/HSPA/UMTS B1/B5/B8 (2100/850/900 MHz)
- Wireless Standards: IEEE 802.11a/n/ac 5 GHz, IEEE 802.11b/g/n 2.4 GHz
- Frequency: 2.4 GHz and 5 GHz
- Signal Rate: 300 Mbps at 2.4 GHz, 867 Mbps at 5 GHz
- EIRP (CE): < 20 dBm (2.4 GHz), < 23 dBm (5 GHz)
- Reception Sensitivity:
  - 5 GHz:
    - 11a 54M: -77 dBm
    - 11ac VHT20 MCS0: -95.5 dBm      11ac VHT20 MCS8: -73 dBm
    - 11ac VHT40 MCS0: -93 dBm      11ac VHT20 MCS9: -68 dBm
    - 11ac VHT80 MCS0: -90 dBm      11ac VHT20 MCS9: -65 dBm
  - 2.4 GHz:
    - 11g 54M: -74.5 dBm
    - 11n HT20 MCS0: -92 dBm      11n HT20 MCS7: -73 dBm
    - 11n HT40 MCS0: -89 dBm      11n HT40 MCS7: -70 dBm
- Wireless Function: Enable/Disable Wireless Radio, Wireless Schedule, WMM, Wireless Statistics
- Wireless Security: 64/128-bit WEP, WPA/WPA2, WPA-PSK/WPA2-PSK encryptions

# Specifications

## Software

- Operating Modes: 3G/4G Router, Wireless Router
- WAN Type: Dynamic IP/Static IP/PPPoE/PPTP(Dual Access)/L2TP(Dual Access)
- DHCP: Server, DHCP Client List, Address Reservation
- Quality of Service: Bandwidth Control
- Port Forwarding: Virtual Server, Port Triggering, UPnP, DMZ
- Dynamic DNS: DynDns, NO-IP
- VPN Server: PPTP VPN, OpenVPN
- Firewall Security: DoS, SPI Firewall, IP and MAC Address Binding
- Protocols: IPv4, IPv6
- Management: Access Control, Local Management, Remote Management, reboot schedule
- Guest Network: 2.4 GHz guest network x 1, 5 GHz guest network x 1

## Others

- Certification:  
CE, RoHS
- Requirements:  
Edge, Firefox, Chrome, Safari, or other JavaScript-enabled browser  
  
\*You are recommended to use the latest version  
  
nano SIM Card
- Environment:  
Operating Temperature: 0°C~40°C (32°F ~104°F)  
  
Operating Humidity: 10%~90% non-condensing  
  
Storage Humidity: 5%~90% non-condensing
- Package Contents  
  
AC1200 Wireless Dual Band 4G LTE Router Archer MR402  
  
RJ45 Ethernet Cable  
  
Power Adapter  
  
Quick Installation Guide



For more information, please visit  
[https://www.tp-link.com/products/details/?model=Archer+MR402\\_V1](https://www.tp-link.com/products/details/?model=Archer+MR402_V1)  
or scan the QR code left

Attention: This device may only be used indoors in all EU member states, EFTA countries and Northern Ireland.  
Attention: This device may only be used indoors in Great Britain.  
Specifications are subject to change without notice. TP-Link is a registered trademark of TP-LINK CORPORATION PTE. LTD. Other brands and product names are trademarks or registered trademarks of their respective holders. Copyright ©2024 TP-LINK CORPORATION PTE. LTD. All rights reserved.  
\*Maximum wireless signal rates are the physical rates derived from IEEE Standard 802.11 specifications. Actual wireless data throughput and wireless coverage, and quantity of connected devices are not guaranteed and will vary as a result of network conditions, client limitations, and environmental factors, including building materials, obstacles, volume and density of traffic, and client location.  
†Use of MU-MIMO requires clients to also support MU-MIMO.  
Actual network speed may be limited by the rate of the product's Ethernet WAN or LAN port, the rate supported by the network cabel, Internet service provider factors and other environmental conditions.  
Maximum 4G download and upload speeds depend on ecternal factors such as the local 4G network coverage, data plan, real-time network capacity, client limitations, and environmental factors. Actual supported frequency bands may vary slightly in different regions due to certification.  
©2024 TP-Link