

Limited
Lifetime
Warranty



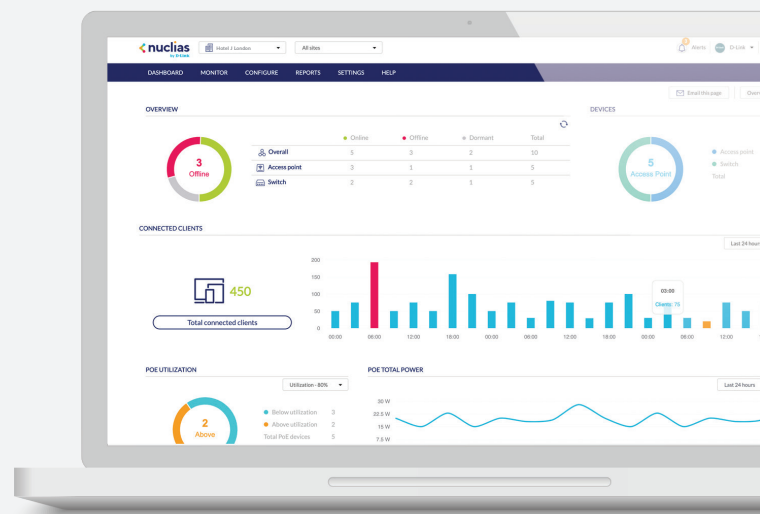
Nuclias Cloud-Managed AC1300 Wave 2 Access Point

DBA-1210P



Nuclias Cloud Overview

Nuclias Cloud is D-Link's complete, cloud-managed networking solution. It allows organizations with any level of IT resources the convenience of simple network deployment and configuration. Management and monitoring is as easy as ever. Troubleshooting is quick and painless. With Nuclias Cloud, scaling is accessible and can be done on an ad hoc basis. It's professional-grade networking, without the need for networking professionals.



▲ Intuitive Dashboard Interface

Solution Features

- » Cloud Management
- » Zero-Touch Deployment
- » Intuitive Interface
- » Unlimited Scalability
- » Real Time Traffic Reporting & Analytics
- » Device Geolocation with Google Maps
- » Visualized Floor Maps
- » Automated Monitoring & Alerts
- » Multi-Tenant & Role-Based Administration
- » Band Steering
- » Bandwidth Optimization
- » Searchable Event Log and Change Log
- » Auto Channel Management
- » Authentication via Customizable Captive Portal, 802.1x and RADIUS Server
- » Social Login for Guest Wi-Fi Access
- » End-to-End Encryption
- » Over-the-Air Firmware Upgrades

Solution Benefits

1 / End-to-End Solution

Nuclias Cloud is a complete Cloud-based WLAN infrastructure solution that provides end to end control over every network device, on any site, in your cloud-managed network. D-Link's wide range of compatible devices offer a variety of capabilities at different price points. As a business driven solution, Nuclias includes a variety of enterprise tools. A customizable captive portal allows for a branded Wi-Fi experience, while reporting & analytics provide you the opportunity to better understand your network.



2 / Cloud Management

Cloud-based network management offers the flexibility and convenience you need. Admins can carry out various tasks using D-Link's centralized management platform via browser or app, anywhere with an internet connection. Unlimited device and site scalability, along with multisite management, allow you to manage a worldwide network from a centralized location. Zero Touch Deployment does away with repetitive device configuration by remotely pushing settings to devices. Furthermore, devices can be managed in batches or individually for more precise control. These features, plus more, all consolidated on a unified platform make management as simple and as hassle-free as it should be.



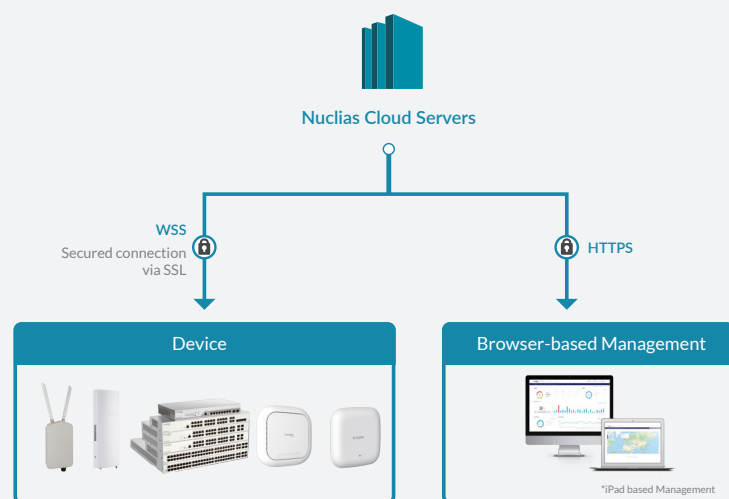
▲ Deployment Scenarios

3 / In-Depth Analytics & Automated Reporting

Nuclias Cloud delivers a deeper understanding of your network and its users through automated traffic analytics and status reports. Traffic can be viewed on a network-wide scale, or down to individual devices. Insights derived from these reports can be used to further drive business value.

4 / Peace-of-Mind

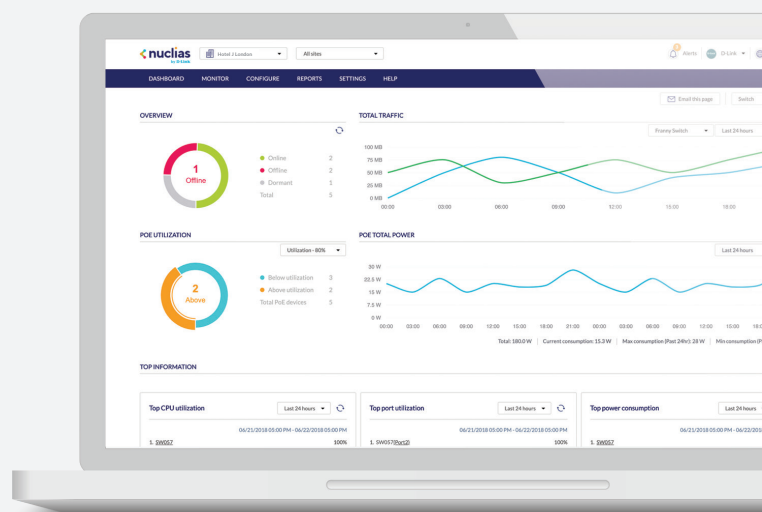
Nuclias Cloud carries a 99.9% reliability SLA (Service Level Agreement) that ensures a constant access to cloud services. Device operation will not be interrupted in the event that cloud services are unavailable. End to end encryption, role & privilege-based access control, amongst a host of other security features work together to preserve the integrity of your network. Automation capabilities provide an additional level of convenience, including control of network parameters, alerting, reporting and firmware updates.



▲ End-to-End Encryption

5 / Ease of Use

Nuclias Cloud has an intuitive interface that is designed to maximize your productivity. Admins can access easy to grasp, at-a-glance details of their network environment. Batch configuration and multitenancy support streamlines administrators' work. Meanwhile, social-login, airtime fairness and bandwidth priority make life easier for users.



▲ Statistics - Network Analytics

Product Overview

The DBA-1210P Nuclias Cloud-Managed Wave 2 Access Point is deployed as a pre-managed, zero-configuration access point controlled through the D-Link Nuclias cloud¹. It is a best-in-class indoor access point designed specifically for enterprise environments. With next-generation 802.11ac Wave 2 dual-band concurrent 2.4 GHz and 5 GHz radios, the DBA-1210P offers high combined data rates to wireless clients allowing for lightning-fast access to bandwidth-intensive applications such as data, voice, and video streaming.

Best-in-class Built for Enterprise AP

- IEEE 802.11ac Wave 2 wireless
- Up to 1.3 Gbps² throughput
- IEEE 802.3az Energy-Efficient Ethernet (EEE)
- Integrated DHCP server
- Allows a high number concurrent users

Power over Ethernet (PoE)

- Supports IEEE 802.3at PoE
- Convenience of using one cord for both power and Internet access
- Reduces installation and energy expenses
- Flexibility to install the DBA-1210P in places that don't have access to electrical infrastructure, such as the ceiling

Enterprise Security

- Personal and Enterprise versions of WPA/ WPA2 (802.11i)/ WPA3
- SSID/Guest/Station Isolation
- IP/MAC address filtering
- Captive Portal (Facebook, Google, Line, Weibo, E-mail auth.)
- Supports RADIUS client and Cipher negotiation

Wave 2 MU-MIMO

- 2x MU-MIMO Antenna with two spatial streams
- Perfect for 'Multi-User', 'Multi-Input', 'Multi-Output' environments
- Significantly reduces network congestion
- Utilizes beamforming to direct signal at intended wireless device

Technical Specifications

General

Interfaces	• IEEE 802.11a/b/g/n/ac Wave 2 wireless	• 1 x 10/100/1000 Mbps Ethernet PoE port
Standards	• IEEE 802.11a/b/n/g/ac Wave 2 • IEEE 802.3az Energy-Efficient Ethernet (EEE) • IEEE 802.3af Power over Ethernet (PoE)	• IEEE 802.3i/u/ab • IEEE 802.3x Flow Control
LEDs	• Power/Status	
Antenna	• Built-in 2 x 2 MU-MIMO antenna	
Maximum Output Power	• 2.4 GHz: 20 dBm	• 5 GHz: 20 dBm
Data Signal Rate	• 2.4 GHz: Up to 400 Mbps ²	• 5 GHz: Up to 867 Mbps ²

Functionality

Security	• WPA3-Personal/Enterprise • WPA2-Personal/Enterprise • WPA-Personal/Enterprise • MAC address filtering	• SSID isolation • Guest isolation • Captive portal • Station isolation
Maximum SSIDs	• Supports up to 16 SSIDs per device • Up to 8 SSIDs per wireless band	

Physical

Dimensions	• 170 x 170 x 28 mm (6.69 x 6.69 x 1.10 in)	
Weight	• Without mount: 320 g (0.71 lbs)	
Power Input	• IEEE 802.3af Power over Ethernet (PoE)	• Power adapter: 100 to 240 V AC, 50/60 Hz
Power Consumption	• PoE: 12 W	• Power adapter: 12 W
Temperature	• Operating: 0 to 40 °C (32 to 104 °F)	• Storage: -20 to 65 °C (-4 to 149 °F)
Humidity	• Operating: 10% to 90% non-condensing	• Storage: 5% to 95% non-condensing
Mean Time Between Failure (MTBF)	• 889,000 hours	
Mounting Options	• Ceiling mount • Wall mount	• Desktop (horizontal)
Certifications	• CE Class B • FCC Class B	• UL • IC Class B

Antenna Pattern		
Orientation	H-Plane	E-Plane
<div>2.4 GHz Ceiling Mounted</div> <div></div>		
<div>2.4 GHz Wall Mounted</div> <div></div>		
<div>5 GHz Ceiling Mounted</div> <div></div>		
<div>5 GHz Wall Mounted</div> <div></div>		

Warranty	
Warranty	Limited Lifetime Warranty
License	
DBA-WW-Y1-LIC	1 Year Cloud License
DBA-WW-Y3-LIC	3 Year Cloud License
DBA-WW-Y5-LIC	5 Year Cloud License
Order Information	
<i>Part Number</i>	<i>Description</i>
DBA-1210P	Nuclias Cloud-Managed Wave 2 Access Point

¹ Active D-Link Nuclias account and valid device license required.

² Maximum wireless signal rate derived from IEEE Standard 802.11g, and 802.11n specifications. Actual data throughput will vary. Network conditions and environmental factors, including volume of network traffic, building materials and construction, and network overhead, lower actual data throughput rate. Environmental factors will adversely affect wireless signal range.

Updated 02/11/2020

For more information

U.S.A. | 17595 Mt. Herrmann Street | Fountain Valley, CA
92708 | 800.326.1688 | dlink.com

Specifications are subject to change without notice. D-Link is a registered trademark of D-Link Corporation and its overseas subsidiaries. All other trademarks belong to their respective owners.
©2020 D-Link Corporation. All rights reserved. E&OE.